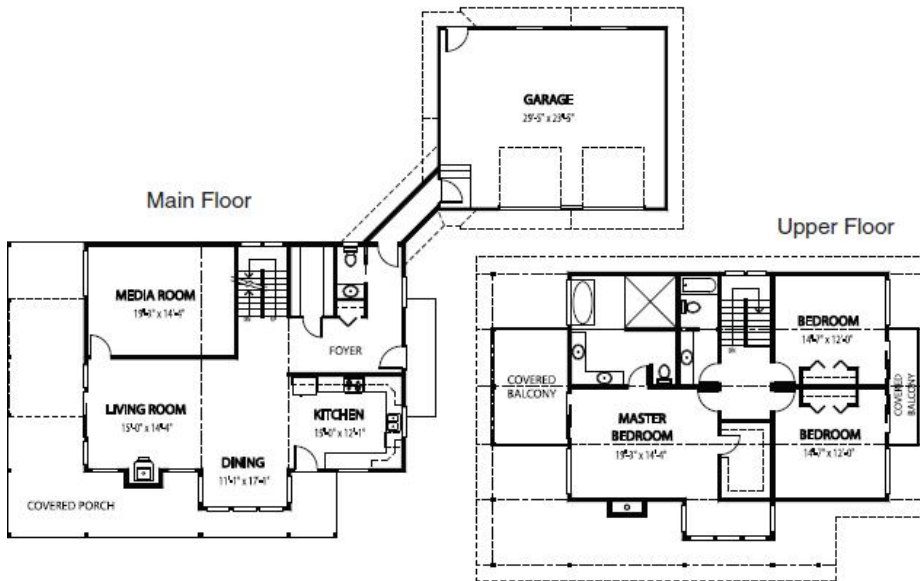


POST & BEAM SERIES

Introducing the Oaksey

PLAN OF THE MONTH



This unique new home recently received a noted "Five Stars Plus Home Energy Rating" due to its energy-efficient design, use of Linwood home package materials, and other green features implemented by the homeowner

Width: 86 ft.
Depth: 67 ft.
Main Floor: 1372 sq. ft.
Upper Floor: 1257 sq. ft.
Total Area: 2629 sq. ft.



Cedar Designs, LLC.
PO Box 1123
Carson, WA 98610

Tel: (800) 728-4474

<http://www.CedarDesigns.com>