

ARCHITECTURAL SERIES

# Introducing the Dogwood

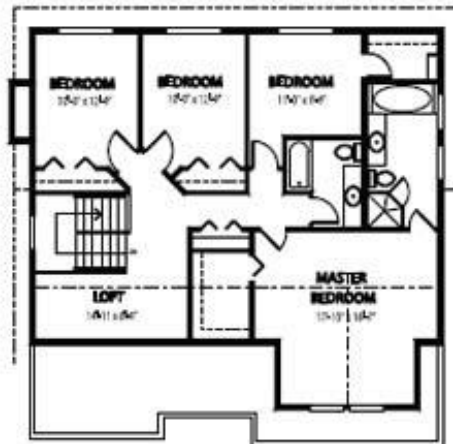
PLAN OF THE MONTH



Main Floor



Upper Floor



Width: 42 ft.  
Depth: 52 ft.  
Main Floor: 1265 sq. ft.  
Upper Floor: 1229 sq. ft.  
Total Area: 2494 sq. ft.

With four bedrooms and a den, the Dogwood is the ideal family home. The open concept kitchen, dining room and great room make this a wonderful home for entertaining.



Cedar Designs, LLC.  
PO Box 1123  
Carson, WA 98610

<http://www.cedardesigns.com>