

The Bryson Bay

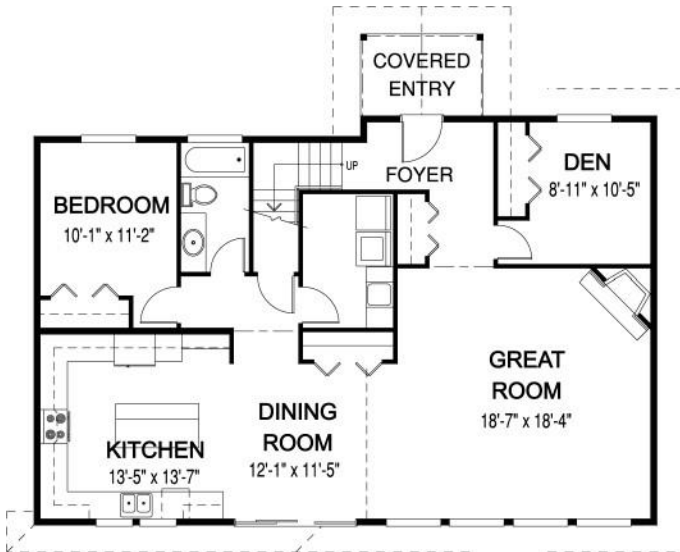
PLAN OF THE MONTH | December 2016



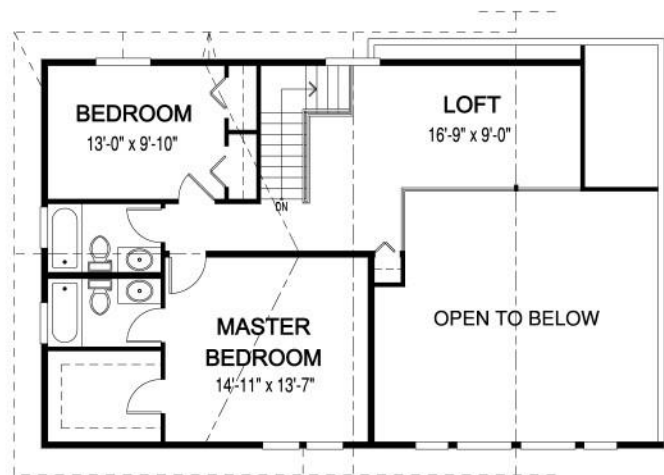
WIDTH: 46 ft. | DEPTH: 36 ft. | MAIN FLOOR: 1333 sq. ft. | UPPER FLOOR: 813 sq. ft. | TOTAL AREA: 2146 sq. ft.

Designs, Images & Plans

MAIN FLOOR



UPPER FLOOR



The Bryson Bay is an award-winning design and material home package. It features a unique wall of windows, as well as optional whitewashed, extra wide, v-joint pine on the walls and ceilings.



<https://www.cedardesigns.com/>

Contact Robert for a price, or call: 1-800-728-4474