

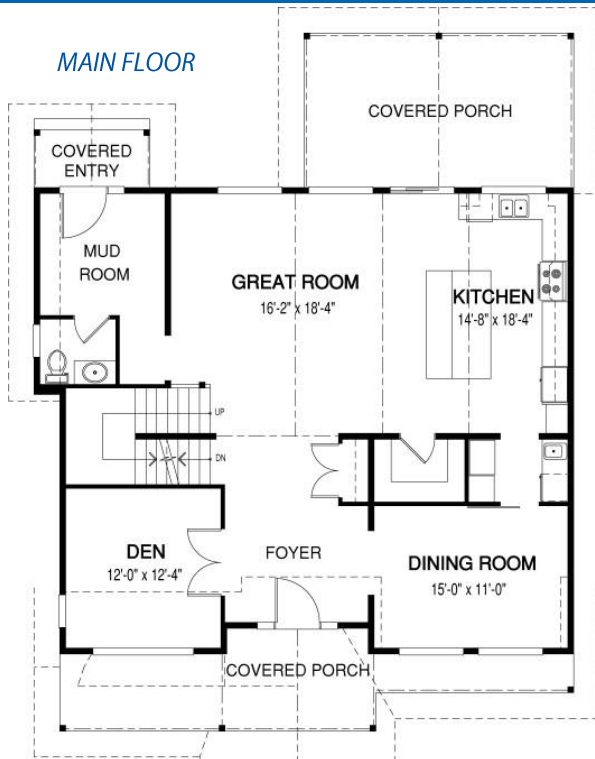
# The Dogwood 3

PLAN OF THE MONTH | July 2016



WIDTH: 42 ft. | DEPTH: 55 ft. | MAIN FLOOR: 1460 sq. ft. | UPPER FLOOR: 1226 sq. ft. | TOTAL AREA: 2686 sq. ft.

MAIN FLOOR



UPPER FLOOR



*This stunning family home features open living areas, multiple bedrooms and a full master suite. A Linwood classic, this home can be modified to suit any city or rural property.*



[www.linwoodhomes.com](http://www.linwoodhomes.com)

Contact your Linwood representative for a price, or call: U.S. & Canada: 1-888-546-9663