

KINGSBURY 1

Stunning...
Prow Design

2 BEDS | 2 BATHS | 1,220 SQ.FT. LIVING



Kingsbury 1 Custom Cedar Homes - First designed for a homeowner in Alaska, this home kit offers incredible value. Vaulted ceilings are a key feature of this cedar home.

Kingsbury 1 - 2 Bed • 2 Bath
Main Floor: 840 - Upper Floor: 380
Total Living Area: 1,220
Width: 22 - Depth: 45
Covered Entry / Porch: 35
Total Living: 1,220 - Total Area: 1,255



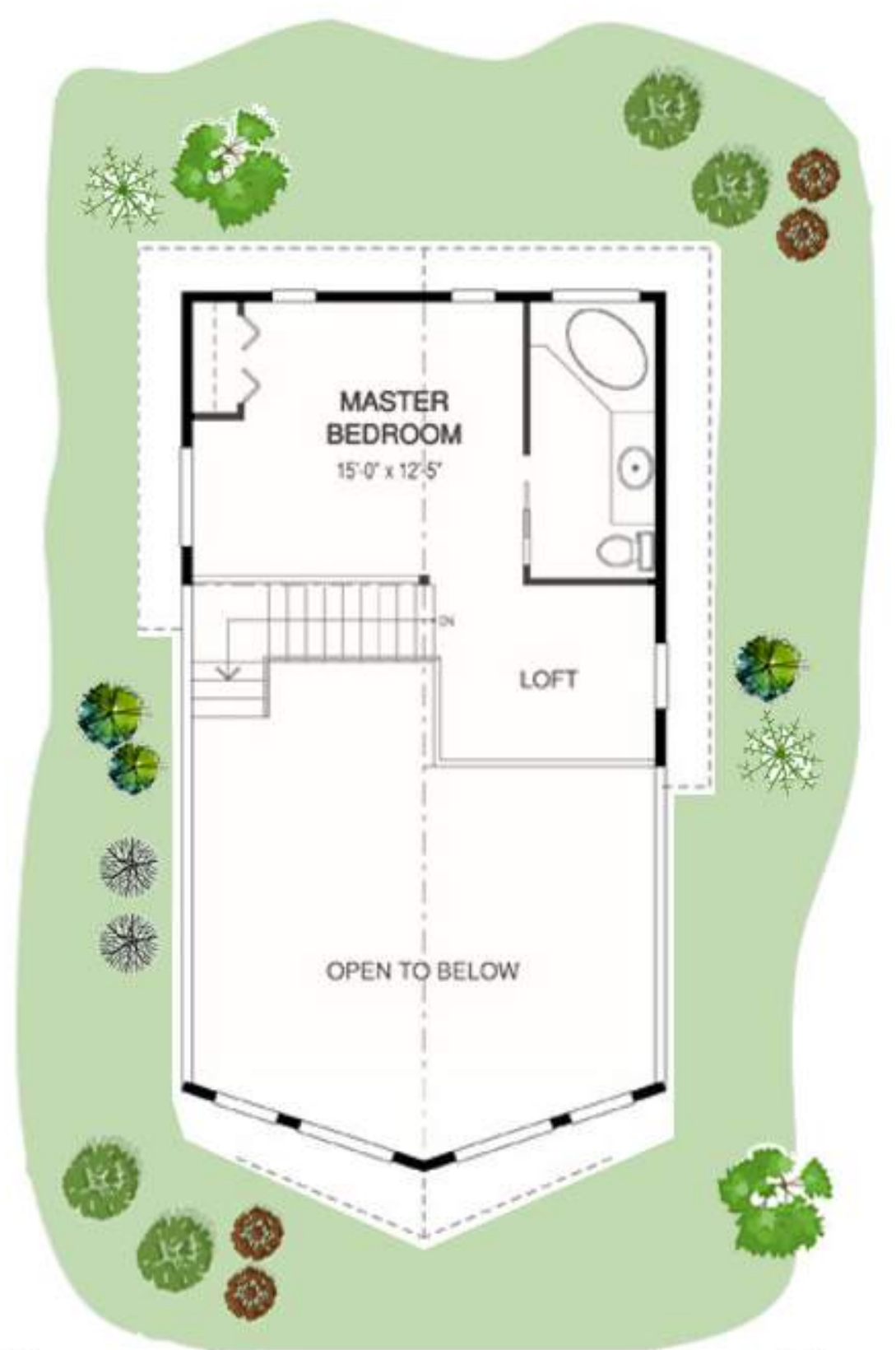
The two-story floor plan with three upper floor master bedroom provides the openness and privacy desired.



The 1,220-square-foot prow design home with vaulted ceilings and open loft area is an impressive open-concept custom home.



Main Floor



Upper Floor



CEDAR HOMES BY CEDAR DESIGNS, LLC

PO Box 1123 | Carson, WA 98610



Visit our website

www.cedardesigns.com

for more information on our custom homes, helpful articles, frequently asked questions, view over 500 hundred floor plans with photo gallery, plus much more.

For over a quarter century, Cedar Homes by Cedar Designs has built a stellar reputation through commitment, a dedication to extraordinary design, personal attention, and an ability to provide award-winning customized cedar homes. We build on the strengths of our reputation and happy to share these strengths with our clients.

Contact us today for a price quote or details

cedardesigns.com

800-728-4474

