

The *Lochlin*

plan of the Month | october 2017



Square Footage

Main Floor	1530
Upper Floor	802
UnFinished/ bonus area	-
ToTal living area	2332
garage	402
Covered entry/porCh	451
balcony/ deck	-
Total area	3185

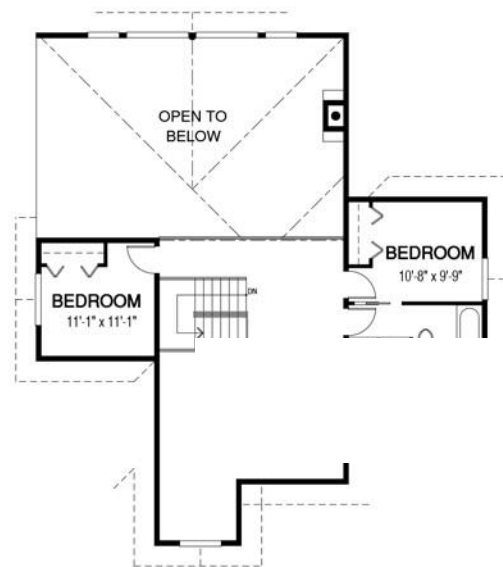
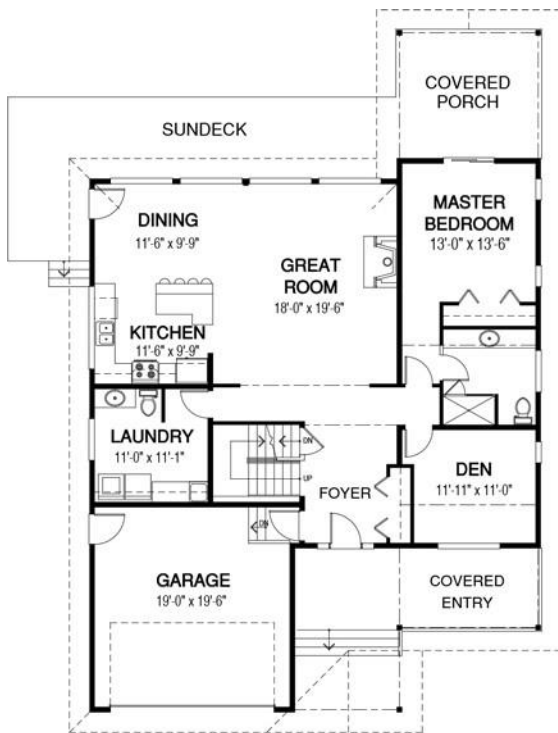
Dimensions

Width	Depth
44	67

designs, images & plans

Main Floor

Upper Floor



With its open concept floor plan, complete with a main floor master bedroom, and elegant vaulted ceilings, the Lochlin is the perfect family home for entertaining.



CUSTOM HOMES

Contact us today for a price quote or details: cedardesigns.com • 1-800-728-4474