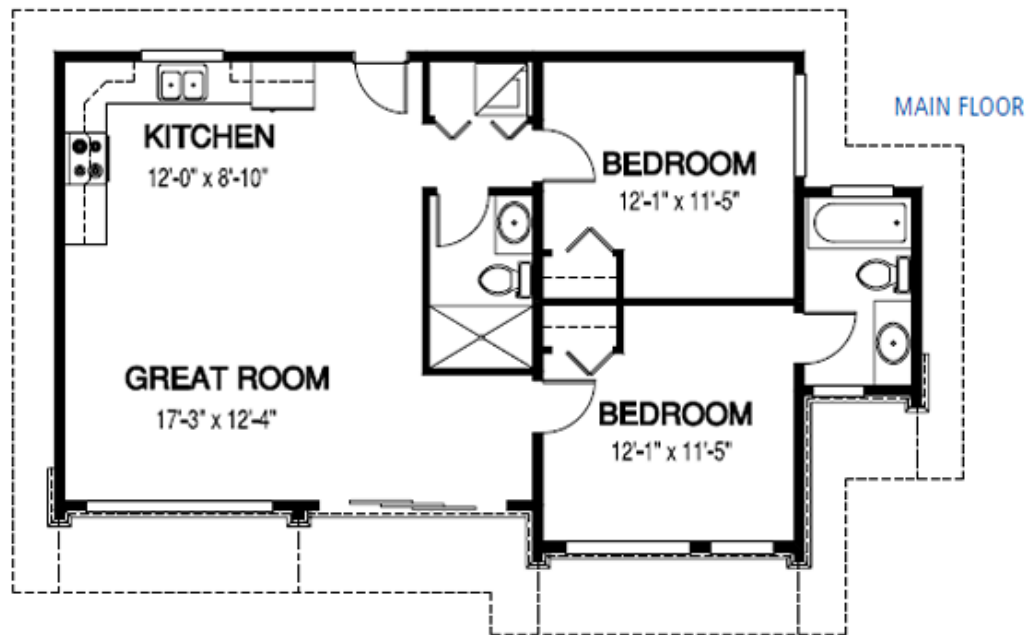


# The Northwynd 2

PLAN OF THE MONTH | January 2012



WIDTH: 42 ft. | DEPTH: 25 ft. | MAIN FLOOR: 875 sq. ft. | TOTAL AREA: 875 sq. ft.



Inspired by the popularity of Northwynd 1 home design, this home kit offers a slightly larger footprint and one extra bathroom. As with all home packages, the building materials are delivered worldwide.

Can be ordered in:

**A** Architectural Specification



**CEDAR DESIGNS**  
CUSTOM HOMES

[www.CedarDesigns.com](http://www.CedarDesigns.com)

Contact your Cedar Designs representative for a price, call: (509) 427-4944 or (800) 728-4474